

Installation Instruction

(Toyota CHR 2017+)

Precautions

- All pictures in this manual are for reference only. Pictures and objects may differ, but the installation method is the same.
- In order to facilitate your installation, please carefully read the product manual before installation; When installing, protect your car's surface and avoid scratching.
- Please check regularly if all accessories connected with the car are loose to ensure safety.

Installation Steps

Refer to the parts list and accessory drawings to check if the accessories are complete. After the product is installed, press the tailgate button for 3-5 seconds. You will hear a sound "DI——" and then loose your hand. Press the tailgate button again and close it. You will hear two sounds. Tail gate learning is finished.



1. Remove the right bracket and pole from the original car, install the new bracket of our company. Engrave with "R" and the arrow is upwards. The ball head is toward the outside of the body and is fixed with screws. (**Note: Someone needs to hold the trunk door.**)



2. Install the new pole of our company with the bracket of the original car. After the poles are installed, please check if it is stuck. (The right side and left side are the same.)



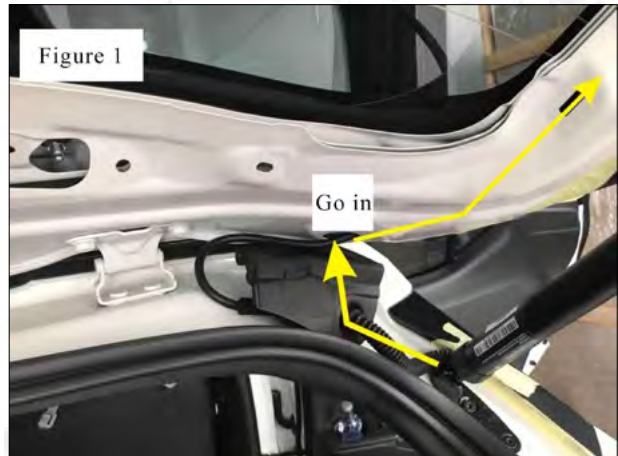
3. Remove the lower left bracket and pole from the original car, install our lower left bracket. Engrave with "L" and the arrow is upwards. The ball head is toward the outside of the body and is fixed with our screws.



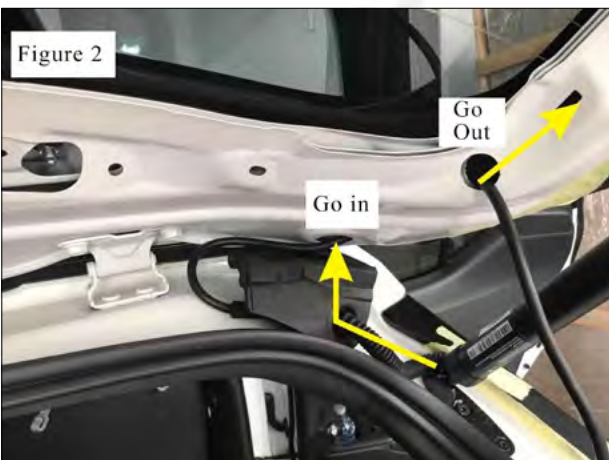
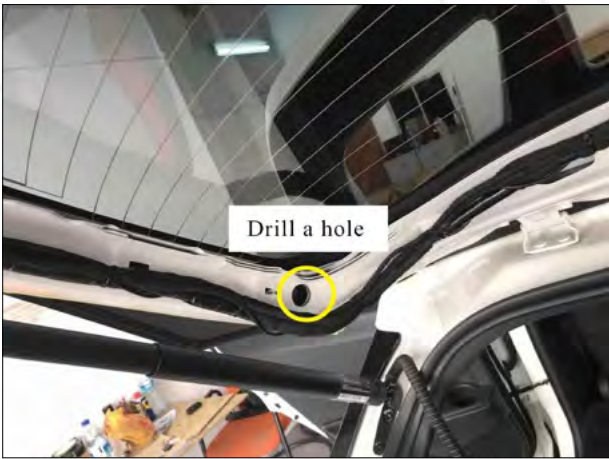
4. Install the new pole of our company with the bracket of the original car. After the poles are installed, please check if it is stuck. (The right side and left side are the same.)



5. Remove the original tailgate trim panel.



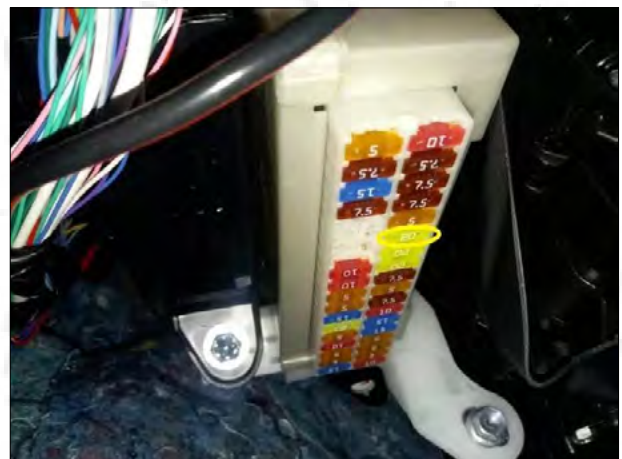
6. If your car is Japanese version, you can put the Holzer line through the hole and comes out from the tailgate. (Otherwise, you can drill a hole and the Holzer line comes out from the new hole, shown as the picture 2) **(The left side and right side are the same)**



7. Remove the original vehicle rubber plug and drill a hole in the yellow circle. (Shown as the picture).



8. Find power and ground wire on the passenger seat.



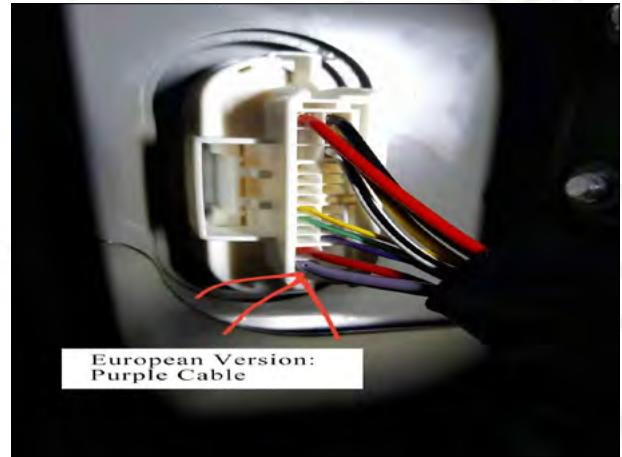
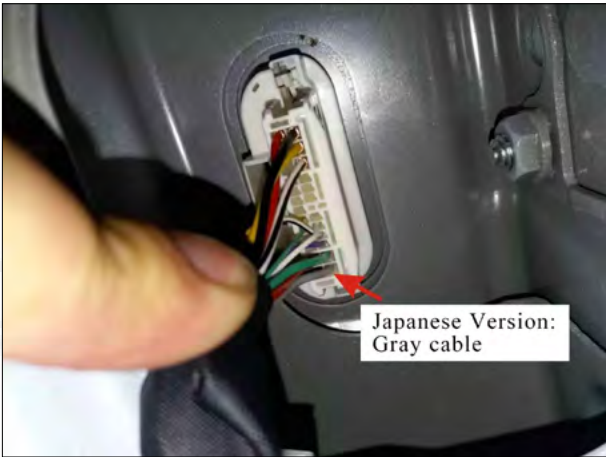
9. Unplug the original car 20A fuse.



10. Plug in the power plug of our company.



11. Connect the ground wire.



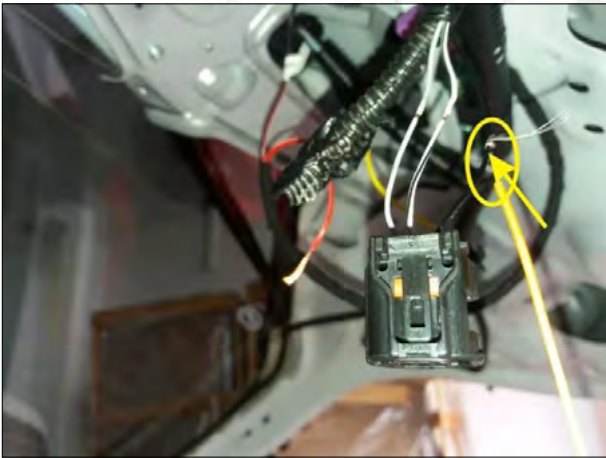
12. Remove the trim panel of the passenger seatbelt B-pillar, and find the middle control.

Japanese version: Use the middle control line (yellow line) of our company connect the gray line.

European version: Use the middle control line (yellow line) of our company connect the purple line.



13. Remove the empty button below the main driver's seat and install the front switch button.



14. Find this socket at the tailgate.



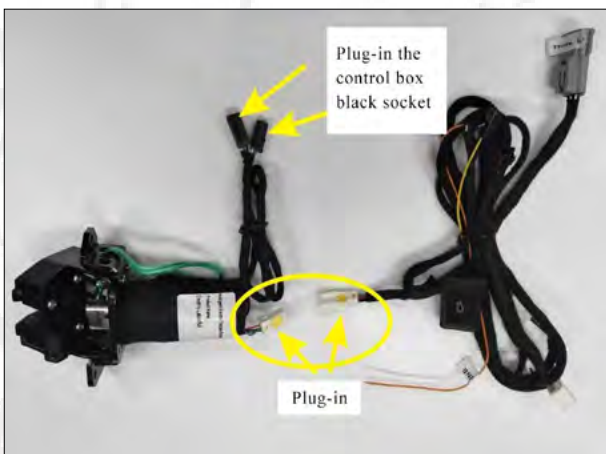
15. The two lines thrown by the front switch, one line connects to the black line of this socket, another one connect the ground.



16. Unplug the original door lock socket on the original door lock, and then insert the three-way adapter socket.



17. Remove the original car screws, remove the original car suction lock, and then install our suction lock, use the original car screws to fix it.



18. Plug-in our top suction lock socket (As shown in the figure).



19. Connect the Holzer line, central control line and power cable one by one to our control box, and then check if they are inserted into right position.



20. Install our control box and fix it with our screws, gaskets and mesons.



21. Install our company's tailgate switch button.

After the installation is complete, you must set the tailgate learning. Make sure that the door can be opened and closed in place. (Raise the tailgate to ideal height. Then press the tailgate button for 3-5 seconds. You will hear a sound "DI——" and then loose your hand. Press the tailgate button again and close it. You will hear two sounds "DI DI". Tail gate learning is finished.) If you do not hear two sounds, learning is unsuccessful and you need to re-learn. If you can not close the door, use your hand to push the door to close when you are learning.

Disclaimer

Due to improper installation and improper use, caused the relevant issues and losses, these not include within our company 's warranty. Thanks for your purchasing our products. Please read the manual carefully before use and collect it for later reference.

Key Control Method

1. Press the original Key fobs three times to open and close the door.
2. Press the front switch button to open and close the door.

Setting Height

- 1.Raise the tailgate to the ideal height;
- 2.Press the tailgate switch for 3-5s;
- 3.When you hear a long sound "Di——", loose your hand and press the tailgate switch again to close the door.
- 4.When you hear two sounds "Di Di", Setting height is finished.

Note: Do not close the door with your hands after setting the ideal height.

Be sure to use our own tailgate switch.

Fault Solution

The original key fob does not work	Check if the yellowe central control line is connected.
Not working after installation	1.Check if the positive power supply is connected with 12V-16V. 2.Check if the power fuse is inserted. 3.Check if the ground wire is connected.
Closing the tailgate not in place The tailgate can only open to half	1.Check if the left and right bracket are installed reversed. 2.Check if the control box wire is inserted. 3.Check if the brackets are fixed with our screws. 4.There are two rubbers on the left and right sides of the original tailgate cover. Check if they are loose and need to be tightened.



All rights reserved.